

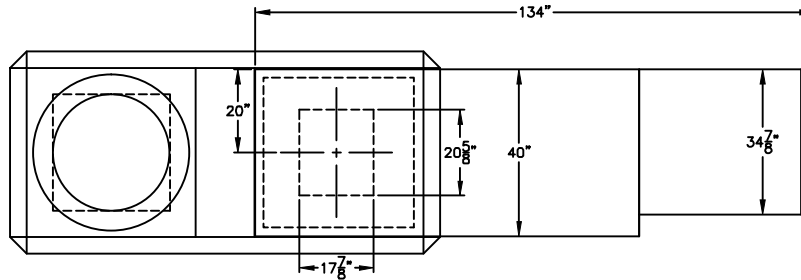
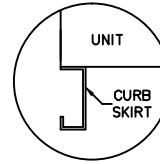
GENERAL NOTES

UNLESS OTHERWISE NOTED, ALL EXTERIOR SURFACES WILL BE 18 GA. GALVANIZED STEEL.

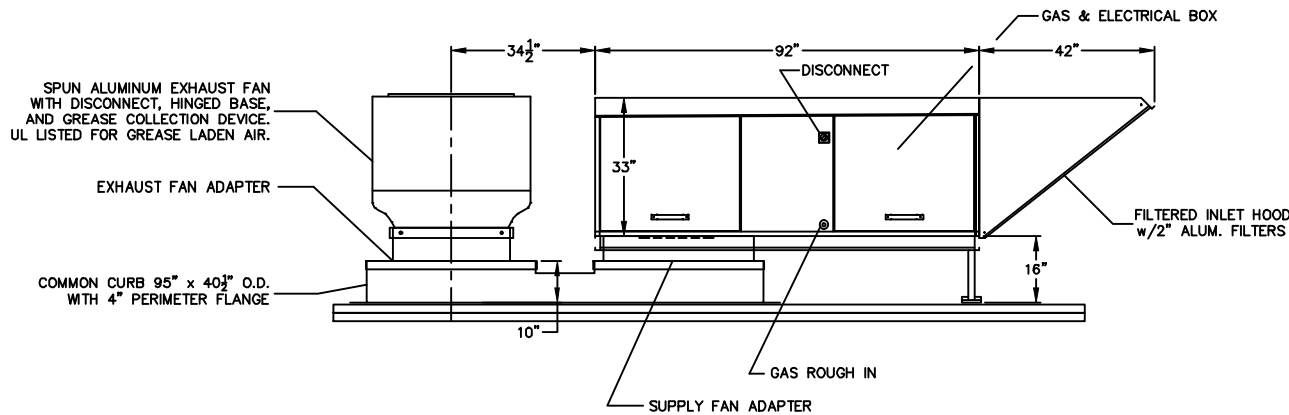
LISTED



CURB SKIRT DETAIL



PLAN VIEW



ELEVATION VIEW

PROJECT NAME:
 REF. NO./DRAWING NO.:
 DATE:

ENGINEERING SPECIFICATIONS

MODEL: V3		
C.F.M.:	T.S.P.:	E.S.P.:
B.T.U. INPUT: 625,000	GAS LINE SIZE: 3/4"	
MIN. GAS PRESS.: 8" W.C.	MAX. GAS PRESS.: 14" W.C.	
H.P.:	VOLTAGE:	SERVICE AMPS.:
BLOWER MODEL # G15		

STANDARD FEATURES:

- DIRECT GAS FIRED UNIT, NATURAL GAS
- ETL CERTIFIED
- GALVANIZED STEEL CASING; UNPAINTED
- DOWN DISCHARGE CONFIGURATION
- MAXITROL SERIES 14
- REMOTE RESET OF FLAME SAFEGUARD
- 24V REMOTE CONTROL PANEL
- ONE EXHAUST FAN STARTER
- 1" INTERNAL INSULATION
- VIBRATION ISOLATORS
- REMOVABLE BIRDSCREEN

OPTIONAL FEATURES:

-
-
-

NOTES:

- SUPPLY AIR FLOW RANGE: 3,200 CFM TO 6,800 CFM
-
-

