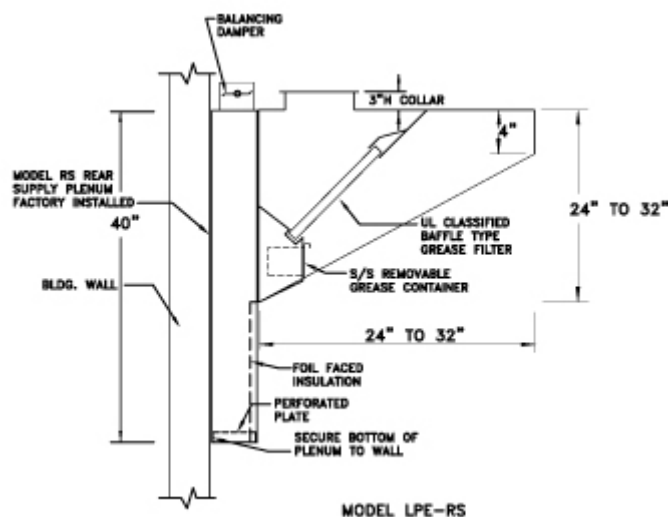


## Exhaust Only Low Profile Type Kitchen Hood - Model LPE Specifications and Options



### **Hood Specifications:**

- Material:** Exposed hood areas constructed of 18 gauge type 304 stainless steel with # 3 polish. Unexposed areas constructed of 18 gauge aluminized steel.
- Construction:** Exterior shell of hood is continuously welded liquid tight per NFPA-96. All exposed joints and seams are polished to the original finish.
- 3" Rear Standoff:** Non-insulated, factory installed at rear of hood provides 3" clearance to rear wall.
- Filters:** U.L. Classified heavy duty aluminum baffle type grease filters located in hood filter frame assembly. Filters are removable for cleaning.
- Grease Container:** Concealed stainless steel removable grease container located in hood interior isolated from air stream.
- Hanger Brackets:** Heavy gauge steel hanger brackets at hood top for 1/2" threaded hanger rod.
- Exhaust Duct Collar:** 3" High Exhaust duct collar is factory installed in top of hood. Duct collar contains perimeter welding flange for field welding of exhaust duct.
- Approvals:** Hood is manufactured to conform to U.L. 710 standards. Hood is NSF Listed and built in strict accordance with the latest edition of National Fire Protection Association, NFPA-96 as well as the Southern Building Code, SBCCI.

### **Hood Options:**

- Material:** Entire hood constructed of 18 gauge or 16 gauge stainless steel or aluminized steel.
- Lights:** U.L. Listed Incandescent type light fixtures located on 3' to 4' centers. Lights include shatterproof globes and are pre-wired to junction box at top of hood.
- Filters:** U.L. Classified heavy duty stainless steel baffle type grease filters.
- Switch Panel:** Hood mounted or provide loose for wall mounting. Panel may contain various light and fan switch combinations as required for system operation.
- 3" Standoff:** Insulated or Non-insulated, factory installed at hood ends or top as required for clearance to combustible or limited combustible surfaces.
- Ceiling Closure Panels:** Closure panels to close off space between top of hood and ceiling as required can be factory installed to hood top or provided loose for field installation.
- Side Skirts:** Left or Right end skirt to close off end of hood as required.
- Wall Panels:** S/S construction wall panels provided loose for field installation behind hood.
- Fire System Piping:** Piping of hood for wet chemical fire suppression system. Exposed piping includes s/s or chrome sleeves.
- Makeup Air Plenums:** Model RS (Rear Supply) or Model FP (Front Perforated) makeup air plenum provided loose for supply makeup up to 90% of Exhaust