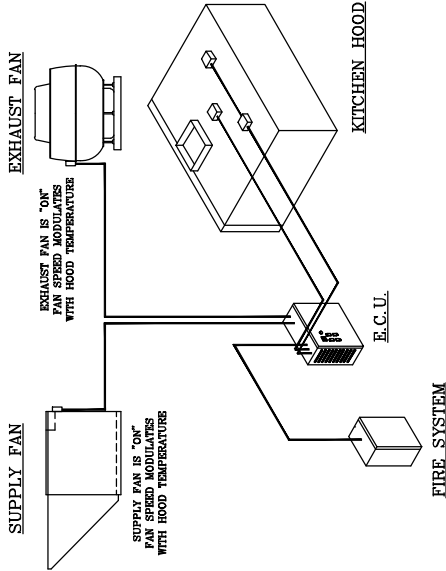
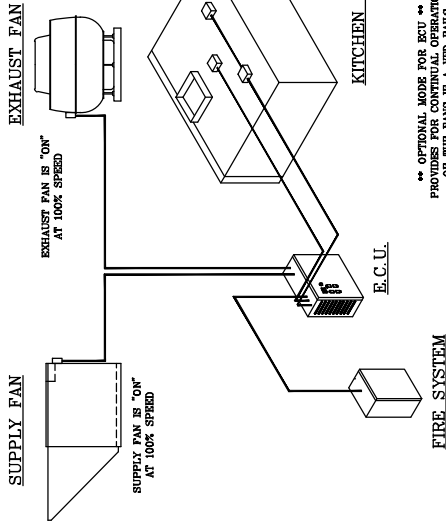


### OPERATION MODE "NORMAL"



1. SYSTEM ACTIVATES EITHER THROUGH THE FAN SWITCH OR THE HEAT SENSOR.
2. THE VFD'S FOR BOTH SUPPLY & EXHAUST FANS ARE SHUT-DOWN. THE FANS OPERATE OFF STANDARD MOTOR STARTERS.
3. THE TEMPERATURE READING OF THE HOOD SENSOR IS DISPLAYED ON THE ECU DOOR.
4. THE HOOD LIGHTS ARE OPERATED BY THE LIGHT SWITCH ON THE ECU DOOR.
5. UPON ACTIVATION OF THE FIRE SYSTEM THE EXHAUST FANS GOES TO 100% AND THE SUPPLY SHUTS DOWN.
6. BASED UPON LOCAL CODES THE HOOD LIGHTS WILL EITHER TURN OFF OR TURN ON WITH FIRE SYSTEM ACTIVATION.
7. IF THE SYSTEM IS SHUT-DOWN WHEN THE FIRE SYSTEM ACTIVATES, THE EXHAUST FAN WILL COME ON AT 100%. THE SUPPLY FAN WILL STAY OFF.
8. IF THE "LOCK AIR" PUSH BUTTON IS PRESSED WHILE THE SYSTEM IS TURNED ON, BOTH EXHAUST AND SUPPLY FANS WILL GO TO 100% FOR THREE MINUTES. THE FANS WILL THEN RETURN TO NORMAL OPERATION.

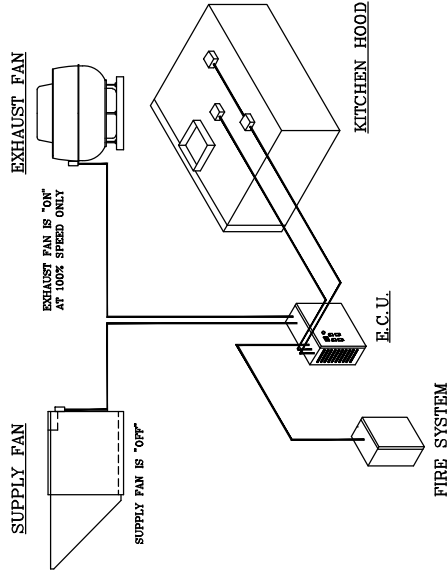


1. SYSTEM ACTIVATES EITHER THROUGH THE FAN SWITCH OR THE HEAT SENSOR.
2. THE VFD'S FOR BOTH SUPPLY & EXHAUST FANS ARE SHUT-DOWN. THE FANS OPERATE OFF STANDARD MOTOR STARTERS.
3. BOTH FANS OPERATE ONLY AT 100% AIRFLOW. NO MODULATION OF THE AIRFLOW IS POSSIBLE.
3. THE TEMPERATURE READING OF THE HOOD SENSOR IS DISPLAYED ON THE ECU DOOR.
4. THE HOOD LIGHTS ARE OPERATED BY THE LIGHT SWITCH ON THE ECU DOOR.
5. UPON ACTIVATION OF THE FIRE SYSTEM THE EXHAUST FANS TURN ON AND THE SUPPLY SHUTS DOWN.
6. BASED UPON LOCAL CODES THE HOOD LIGHTS WILL EITHER TURN OFF OR TURN ON WITH FIRE SYSTEM ACTIVATION.
7. IF THE SYSTEM IS SHUT-DOWN WHEN THE FIRE SYSTEM ACTIVATES, THE EXHAUST FAN WILL COME ON. THE SUPPLY FAN WILL STAY OFF.

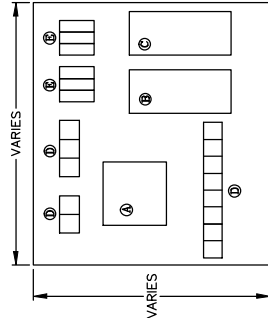
### OPERATION MODE "BY-PASS"

\*\* OPTIONAL \*\*

### OPERATION MODE "CLEAN"

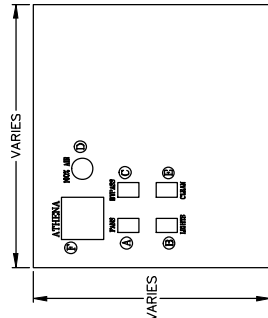


1. THE FAN SWITCH IS TURNED OFF AND THE HEAT SENSOR TEMPERATURE IS BELOW THE ACTIVATION POINT.
2. WHEN THE "CLEAN" SWITCH IS TURNED ON THE EXHAUST FAN COMES ON AT 100% AND THE SUPPLY FAN STAYS OFF. THERE IS NO MODULATION OF THE EXHAUST FAN.
3. THIS MODE IS FOR TEMPORARY OPERATION OF THE EXHAUST FAN TO REMOVE FUMES THAT MAY BUILD UP FROM CLEANING OF THE HOOD AND COOKING EQUIPMENT.
4. THE HOOD LIGHTS ARE OPERATED BY THE LIGHT SWITCH ON THE ECU DOOR.



- (A) PLC CONTROLLER
- (B) EXHAUST FAN VFD
- (C) SUPPLY FAN VFD
- (D) TERMINAL BLOCKS
- (E) FUSE BLOCK

### ECU INNER PANEL



- (A) MAIN FAN SWITCH
- (B) HOOD LIGHT SWITCH
- (C) OPTIONAL BYPASS SWITCH
- (D) 100% OVERRIDE BUTTON
- (E) CLEANING MODE SWITCH
- (F) TEMPERATURE DISPLAY

### ECU FRONT COVER

NO.	REVISIONS	DATE	BY
5			
4			
3			
2			
1			

THIS DOCUMENT IS THE PROPERTY OF M.S. INC. AND IS RENDERED IN CONFIDENCE FOR THE SALE PURPOSE OF AIDING THE TRANSACTION OF BUSINESS BETWEEN M.S. INC. AND RECIPIENT. IT IS TO BE RETURNED TO M.S. INC. IMMEDIATELY TO OTHERS THE INFORMATION CONTAINED HEREIN OR TO REPRODUCE ALL OR ANY PART OF THE DOCUMENT. THE DELIVERY OF THIS DOCUMENT TO ANY OTHER PARTY WITHOUT THE WRITTEN CONSENT OF M.S. INC. SHALL BE IN ANY MANNER DISCLOSED THEREIN.

**AIR SYSTEMS**
  
 316 W. CENTRAL AVE.
   
 SUITE #606
   
 WINTER HAVEN, FL. 33880
   
 PH. (863) 294-2272
   
 FAX (863) 294-2704

PROJECT NAME: \_\_\_\_\_
   
 PROJECT LOCATION: \_\_\_\_\_
   
 REPRESENTATIVE: \_\_\_\_\_
   
 CONTRACTOR: \_\_\_\_\_
   
 ARCHITECT: \_\_\_\_\_
   
 ENGINEER: \_\_\_\_\_
   
 DRAWN BY: GAB DATE: 10/05/10
   
 CHECKED BY: GAB REV.: 10/05/10
   
 SHEET 2 OF 2 REF. NO.: \_\_\_\_\_